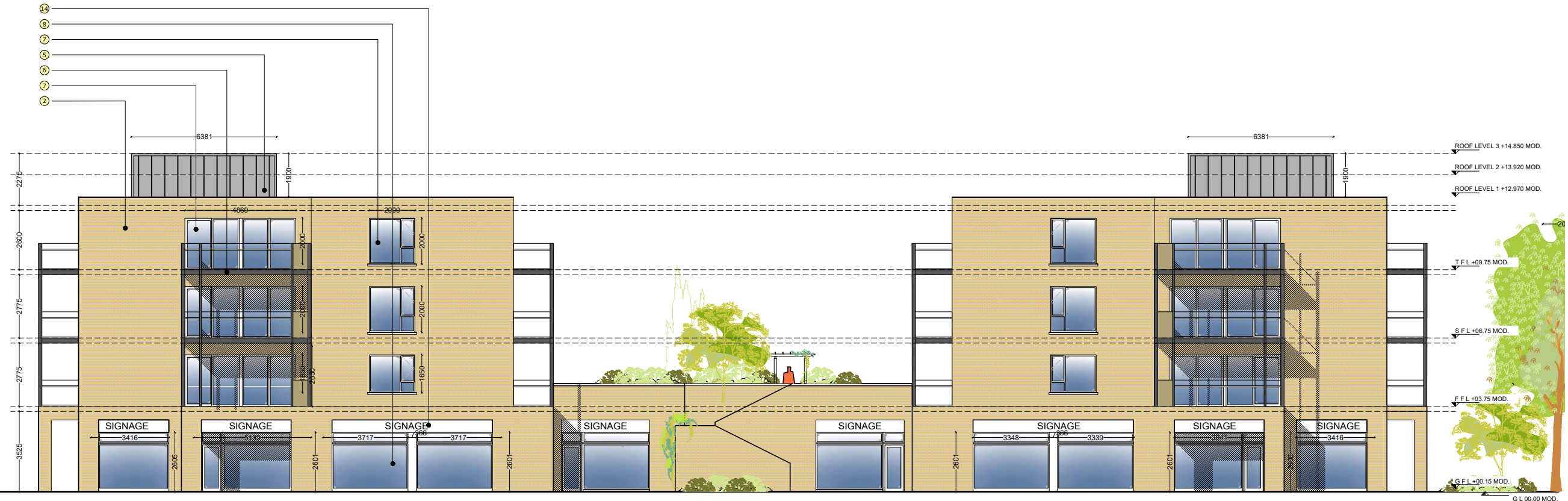


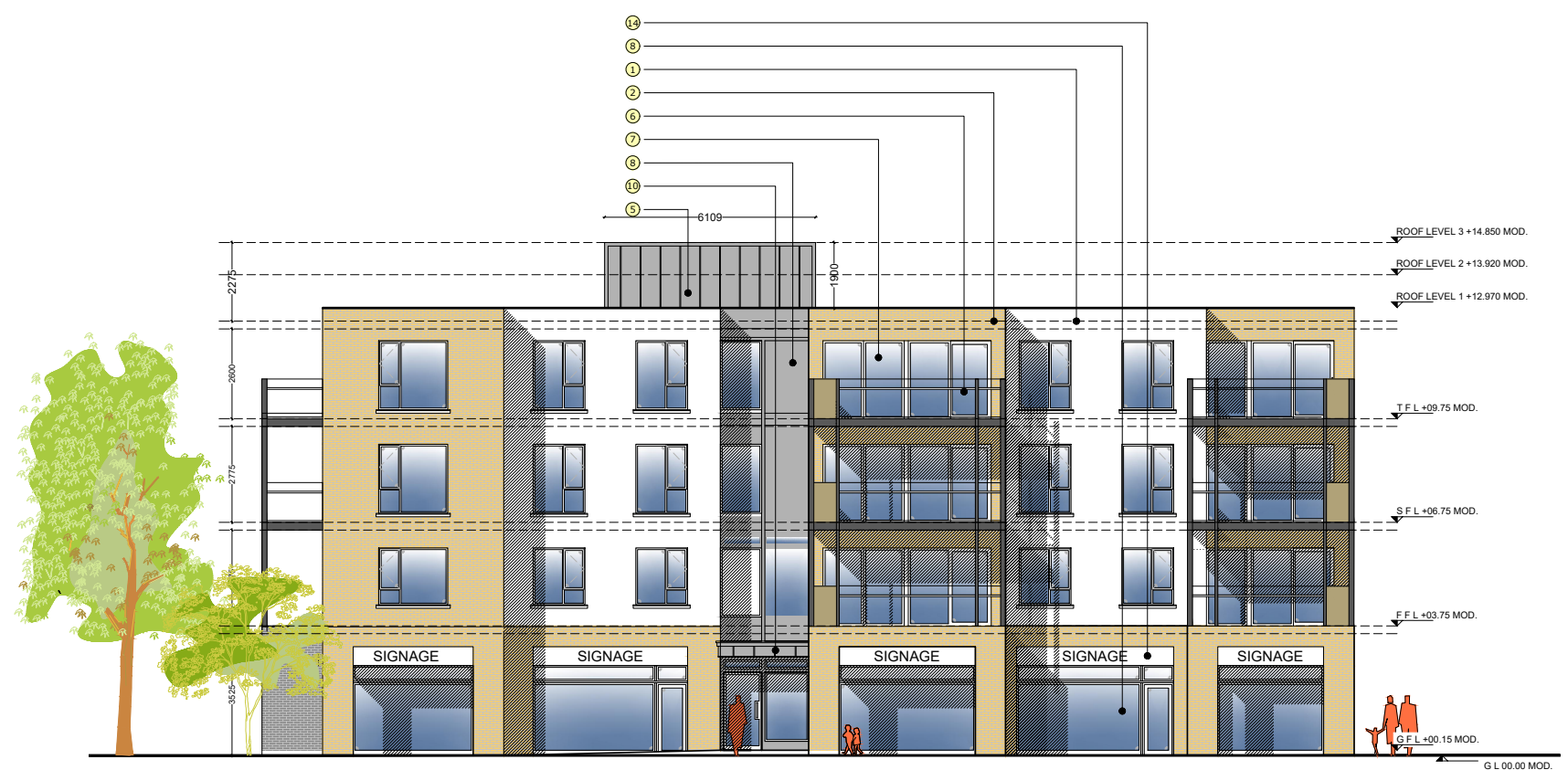
DO NOT SCALE FROM THIS DRAWING. USE FIGURED DIMENSIONS IN ALL CASES.  
 VERIFY DIMENSIONS ON SITE AND REPORT ANY DISCREPANCIES TO THE ARCHITECTS IMMEDIATELY.  
 THIS DRAWING TO BE READ IN CONJUNCTION WITH THE ARCHITECTS SPECIFICATION.  
 THIS DRAWING IS COPYRIGHT AND MAY ONLY BE REPRODUCED WITH THE ARCHITECTS PERMISSION.  
 NOTES



APARTMENT BLOCK - 'NEIGHBOURHOOD CENTRE'  
 SOUTH ELEVATION  
 SCALE 1:200 @A3, 1:100@A1

- LEGEND: MATERIALS**
- ① Knapped Plaster Finish
  - ② Selected Buff Brick, English Bond
  - ③ Selected Red Brick, English Bond
  - ④ Selected Blue/Grey Brick, English Bond
  - ⑤ Standing Seam Metal Cladding
  - ⑥ Steel Balcony, Handrail and Uprights with Glazed Panels to later detail
  - ⑦ Selected Glazing System, (Aluclad or equivalent)
  - ⑧ Selected Glazing System & Spandrel Panelling
  - ⑨ Obscured / frosted Glazing
  - ⑩ Metal Canopy to Main Entrance
  - ⑪ Natural Effect Slate, Blue/Black
  - ⑫ Treated Larch Cladding, Black
  - ⑬ Timber Effect Privacy Screen
  - ⑭ Signage ( provided by tenants )

- NOTES:**
1. FOR INDIVIDUAL UNIT FLOOR LEVELS PLEASE REFER TO ENGINEERING SITE LAYOUT
  2. FOR INDIVIDUAL UNIT NORTH POINT ORIENTATION PLEASE REFER TO SITE LAYOUT MAP
  3. APPLIED BRICK FINISH IS DEPENDENT ON AVAILABILITY AND SITE LOCATION
  4. ALL DIMENSIONS ARE IN mm
  5. PLANNING DRAWING ONLY
  6. DO NOT SCALE FROM DRAWINGS



APARTMENT BLOCK - 'NEIGHBOURHOOD CENTRE'  
 EAST ELEVATION  
 SCALE 1:200 @A3, 1:100@A1

**PLANNING**

**Gittens Murray Architects Ltd**

JOB  
 WATERROCK HOUSING,  
 MIDLETON, CO. CORK

CLIENT  
 HAVEN FALLS LTD.

TITLE  
 PROPOSED NEIGHBOURHOOD CENTRE  
 ELEVATIONS  
 SHEET # 1

DATE 07.10.2022 SCALE 1:100 @A1, 1:200@A3  
 DRN SH CHECKED MG

**GMA**  
 ARCHITECTS  
 INTERIOR DESIGNERS  
 5 William St.  
 Kilkenny.

JOB NUMBER DRWG NUMBER REVISION  
**20/033-LRD-A-NC-201**

T E L : ( 0 5 6 ) 7 7 5 3 9 3 3  
 F A X : ( 0 5 6 ) 7 7 5 3 9 0 9  
 email: info@gmarch.net

DETAIL NUMBER  
 LOCATION SHEET  
 DETAIL NAME  
 DETAIL SCALE